

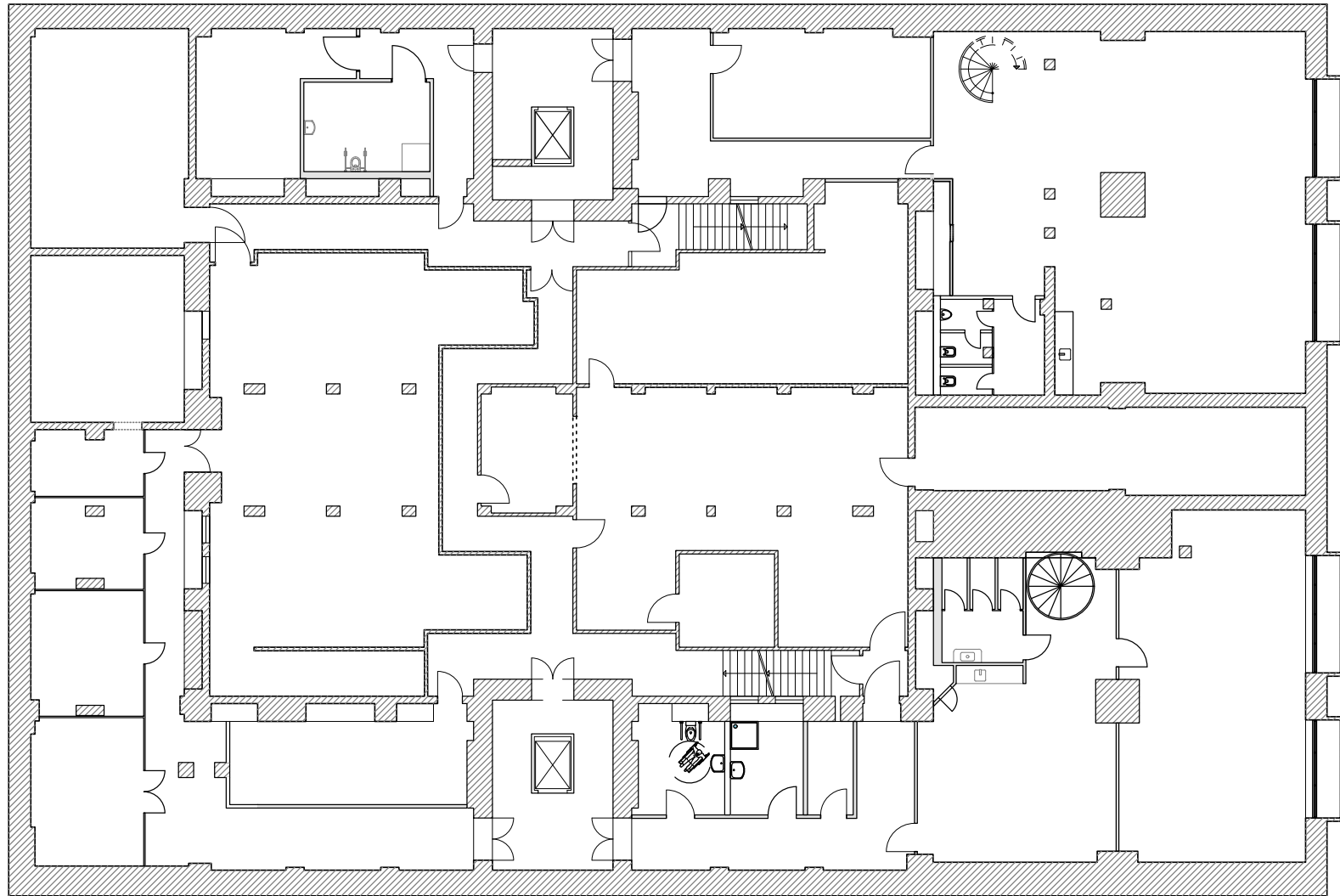
Pelikan-Haus

PELIKAN HAUS

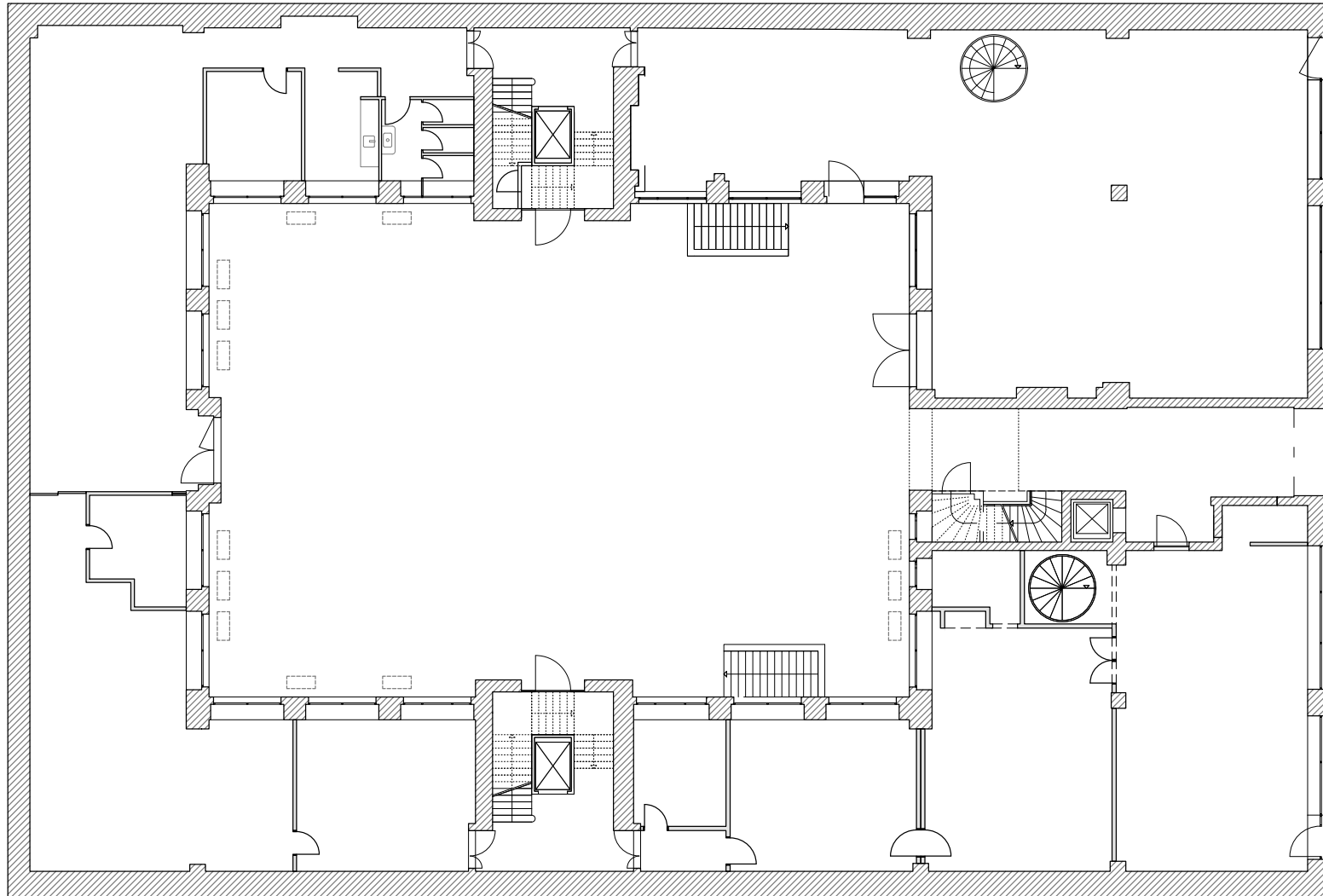
Berlin Kreuzberg

RITTERSTRASSE 9-10, 10969 BERLIN

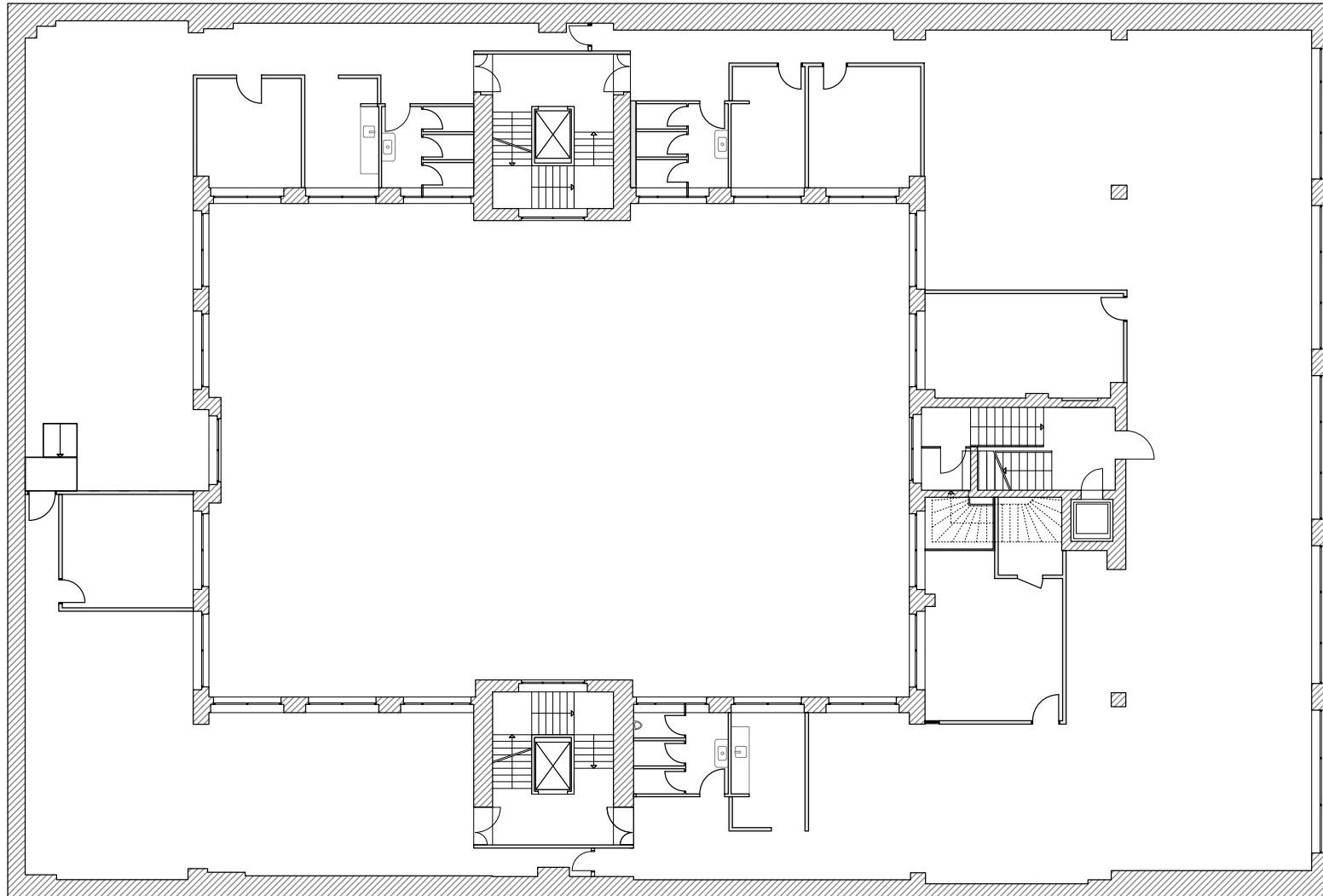
Untergeschoss



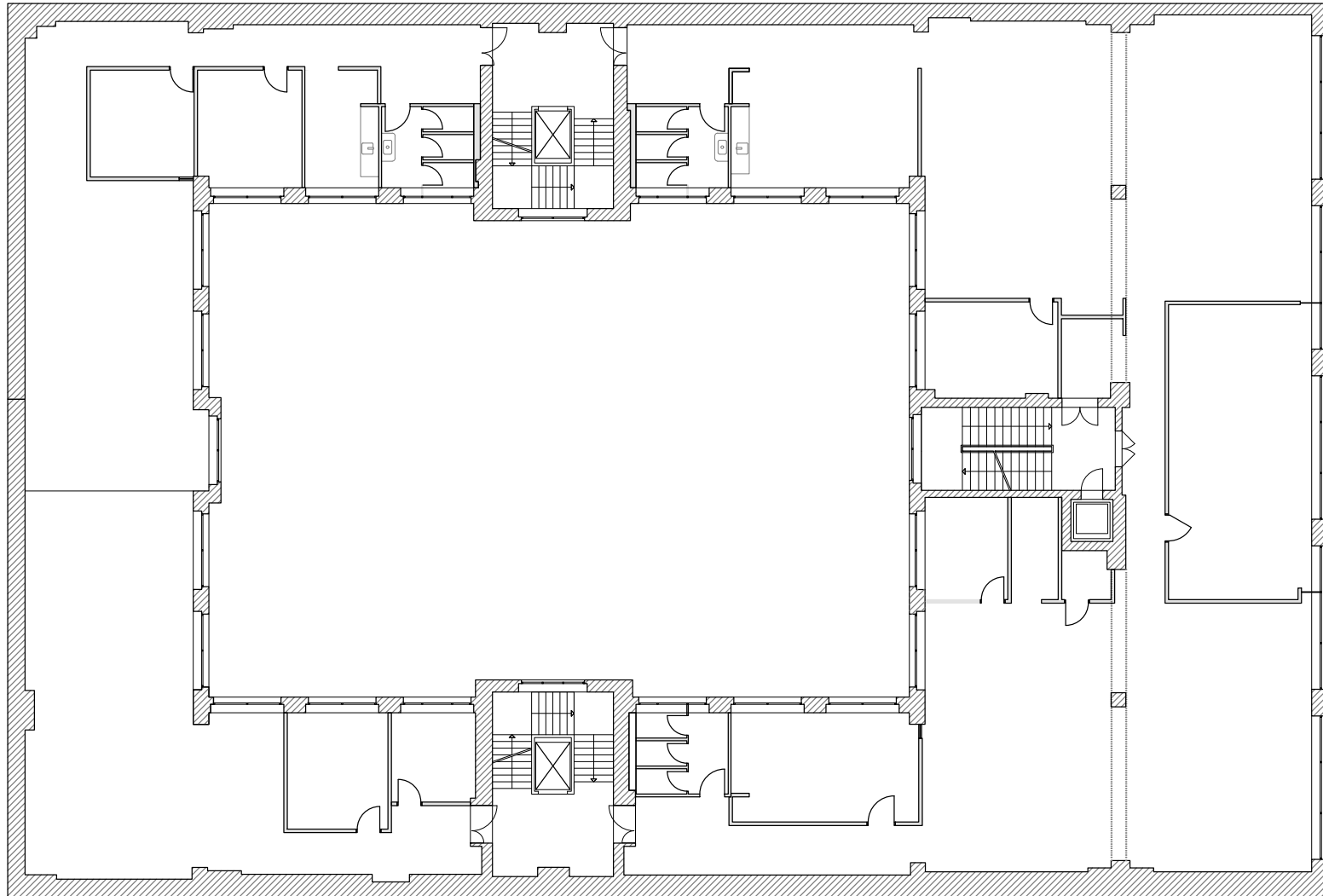
Erdgeschoss ca. 1.074 m² Mietfläche inkl. UG



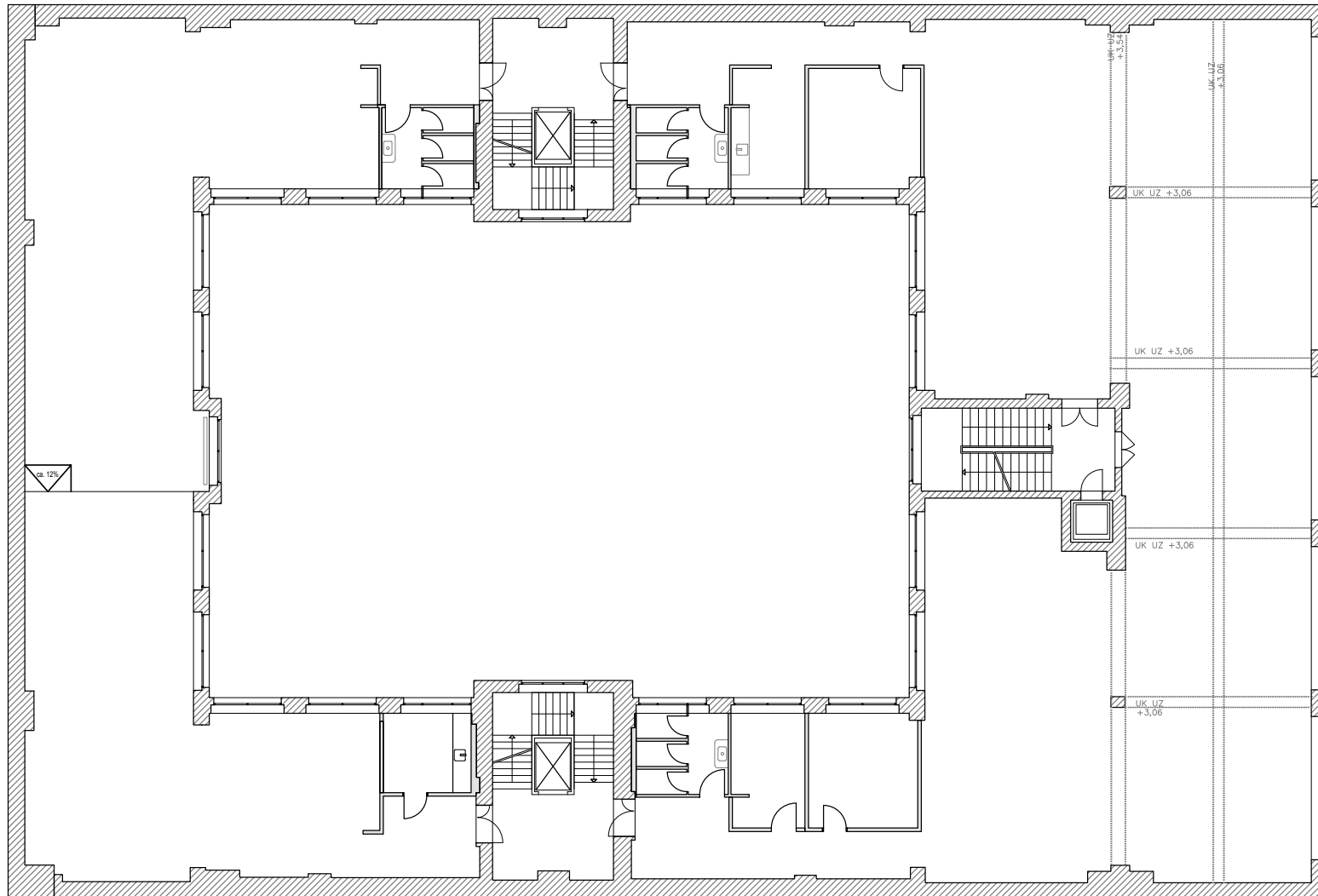
1. Obergeschoss ca. 842 m² Mietfläche



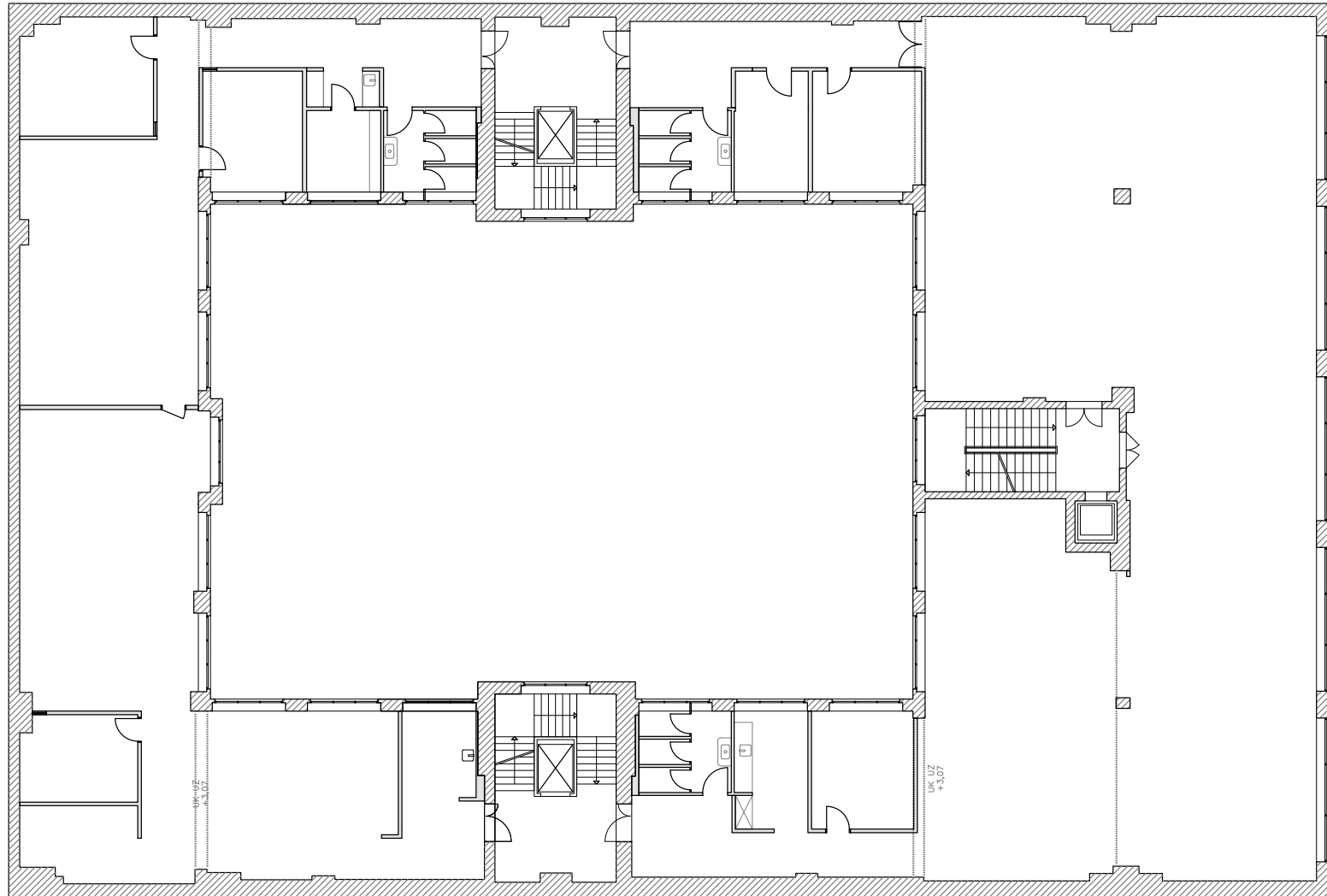
2. Obergeschoss ca. 845 m² Mietfläche



3. Obergeschoss ca. 863 m² Mietfläche



4. Obergeschoss ca. 862 m² Mietfläche



Dachgeschoss ca. 843 m² Mietfläche

